

Caution:

NOT A TOY. ADULT SUPERVISION REQUIRED. MISUSE OR CARELESS USE MAY CAUSE SERIOUS INJURY OR DEATH. **DANGEROUS UP TO 350 YARDS (320 METER).**

This air rifle is primarily intended for adult use. However, due to its light weight and short reach this air rifle can be handled comfortably by some youths of 14 years and up with adult supervision at all time.

WARNING TO PARENTS

This product is not intended for use by those persons under 14 years of age. Both shooters and spectators should always wear protective eye wear.

This air rifle may be used in restricted areas, even indoors if the proper precautions are observed to insure

against personal injury and/or damage to walls, windows, personal property, etc.

The buyer and user have the duty to obey all laws regarding the use and ownership of this airgun. We recommend that any individual under the legal age be supervised at all times by an adult during the operation of this airgun.

SAFETY PRECAUTIONS

Airguns can cause serious harm, injury, and in some instances, even death and must therefore be handled with great care!

PLEASE READ THE ENTIRE OPERATOR'S/OWNER'S MANUAL BEFORE ATTEMPTING TO OPERATE YOUR AIR RIFLE.

Always keep in mind that previous careless handling might cause a pellet to remain in the barrel.

Always treat the gun as if it is loaded.

Always check to see if gun is loaded when removed from storage or received from another person.

Always check any gun that has been dropped to ensure that its function has not been affected.

Always wear shooting glasses when operating any gun, both shooters and spectators.

Always keep safety engaged until you are ready to shoot and are pointing the rifle in a safe

direction (down range).

Always keep away from the trigger area until it is safe to shoot.

Never store a gun with projectiles in gun or near gun

Never fire at hard objects close as ricochets can occur.

Never point your gun, charged or uncharged, loaded or unloaded, with safety on or off, at or near anything you do not intend to shoot. Too many accidents have occurred with guns that were supposed to be empty or on safe. Never lean your rifle against a car, fence or any other movable object that could cause the rifle to fall.

Never allow others to use or inspect your gun without first instructing them in the fundamentals of safe use. For everyone's protection, stress keeping the muzzle pointed in a safe direction at all time. Inform them of any other common sense rules of safety which the situation may require.

Never shoot at anything without a safe background; a miss could let your pellet carry past the intended target and hurt someone or damage something far beyond it.

Never make any trigger adjustments with the gun cocked or loaded

CAUTION: YOUR BACKSTOP SHOULD BE INSPECTED FOR WEAR BEFORE AND AFTER EACH USE.

DISCONTINUE USE IF THE BACKSTOP SURFACE SHOWS SIGNS OF FAILURE. SINCE BACKSTOP SURFACES EVENTUALLY FAIL, ALWAYS PLACE THE BACKSTOP IN A LOCATION THAT WILL BE SAFE SHOULD THE BACKSTOP FAIL. DISCONTINUE THE USE OF A BACKSTOP IF THE PROJECTILE REBOUNDS OR RICOCHETS.

UNDERSTANDING CO2 AIRGUNS

This airgun is designed for use in temperatures between 40°F and 100°F (5°C-38°C). Below 40°F (5°C), the projectiles will travel much slower than normal. Basically the velocity will increase as temperature increases. If excessive temperatures (100°F+or 38°C+) are reached, the pressure in the system becomes so high that the hammer does not have enough energy to push the valve open. As a result, the valve is unable to release as much CO2 for each shot and the performance goes down.

At room temperature (68°F or 20°C), the system is under about 900 pounds per square inch (PSI).

Never leave gun charged when it will be near a heat source or direct sunlight. Damage to the seals may result if gun is overheated. Never allow CO2 cartridges to come in direct contact with heat source **WARNING: CO2 CARTRIDGES MAY EXPLODE AT TEMPERATURES ABOVE 160°F (71°C).**

To remove partially filled CO2 cartridges from this gun, put safety (p/n'3300) in the fire (F) position, point the gun in a safe direction, cock and fire until all of the CO2 has been discharged.

The best way to judge if the system is completely discharged is to see if you are able to remove the cap easily by hand.

If you cannot turn the tube cap (p/n#3400, also known as piercing cap) BY HAND, the system is still under very high pressure. You should keep discharging the system by firing in a safe direction
WARNING: NEVER USE TOOLS ON THE TUBE CAP. If the tube cap is too difficult to remove by hand, do not attempt to remove by force. Return the gun with note, freight prepaid, for service stating the tube cap is difficult to remove by hand. **WARNING: ALWAYS REMOVE THE TUBE CAP BEFORE SERVICING CO2 AIRGUNS.**

The little vent nose located between the fourth and the fifth thread at the end of the tube releases any remaining pressure in the system. You should stop turning the tube cap once you hear the gas escaping.

WARNING: DON'T PUT YOUR HEAD CLOSE TO THE TUBE CAP. You must wait for the system to become completely discharged. You may then turn the tube cap completely off very slowly by hand.

CAUTION: ALWAYS POINT THE GUN IN A SAFE DIRECTION EVEN WHILE TURNING THE TUBE CAP BY HAND.

CHARGING THE RIFLE: This CO2 air rifle operates with two CO2 cartridges simultaneously. To charge, first remove the tube cap. If tube cap is difficult to turn off, check to make sure that the gun is not already charged with gas by disengaging the safety (p/n #3300) and firing the gun in a safe direction. When you are sure that the gun is completely discharged of gas (CO2), you can remove the tube cap by hand.

After removing the tube cap, then cock gun by pulling up and back on the bolt knob (p/n'1300), engage safety (p/n#3300) so that the arrow points to the "S" indicating it is on safe, insert two (2) 12 gram CO2 cartridges BACK TO BACK and tighten the tube cap completely. Then back the tube cap off 1/4 turn. This will release the CO2 from the cartridge adjacent to the tube cap. The other cartridge will be pierced when the rifle is fired.

OPERATION AND MAINTENANCE

To fire this air rifle with pellets, pull bolt knob (p/n #1300) up and back all the way until you hear the click of the trigger engaging. Insert a 0.177 cal (4.5 mm) pellet nose first in breech (p/n'1200). Chamber pellet by pushing the bolt knob (p/n#1300) forward and down to lock breech, disengage safety (p/n #3300) and fire safely.

Avoid getting pinched in breech (p/n'1200) when closing bolt (p/n#1100). It is recommended to load projectiles with your trigger finger, as well as, closing the breech (p/n'1200) with same hand. This will assure that the gun won't be triggered off prematurely.

Installing scope to the receiver grooves is recommended for shooters preferring a higher quality sighting system. In most cases, removal of sights (front and rear) is recommended for unobstructed mounting and view through optics.

TRIGGER ADJUSTMENTS: All adjustments (p/n#1807,p/n#1808 and p/n#1810) are made with safety (p/n'3300) and stock (p/n#2900 or p/n #3000) removed. To remove safety (p/n#3300), put gun on safe and push out toward right hand (RH) side. **WARNING: CHANGING FROM THE ORIGINAL SETTINGS OR MODIFYING THE LENGTH OF THE ORIGINAL SCREWS WILL VOID THE WARRANTY AND THE PRODUCT LIABILITY ON THIS GUN.**

- Top Screw (p/n#1807): Take-up or sear (p/n#1805) engagement. Turning the top screw clockwise to reduce or counter-clockwise to increase engagement. The factory presets the sear engagement for about 0.125".



Middle Screw (p/n'1808): Over travel adjustment. Turn the middle screw clockwise to reduce or counter-clockwise to increase over travel of the trigger (p/n#1804) beyond the point where there trigger releases sear (p/n'1805). The middle screw can be turned clockwise too far which will prevent gun from firing. It is recommended that over travel be minimal for best trigger feel. The factory presets the over travel for about 0.25"

- Bottom Screw (p/n#1810): Tension adjustment. Turn the bottom screw clockwise to increase or counter-clockwise to decrease trigger pull weight. The factory presets the trigger pull weight for about 4 lb. (17.8N). **WARNING: THE TRIGGER ON THIS GUN IS CAPABLE OF BEING SET BELOW TWO (2) lb. (8.9N). ACCIDENTAL DISCHARGE CAN OCCUR IF THE RIFLE IS DROPPED.**

Modification of the gun's mechanism may cause a gun to malfunction. Tampering with a gun may make it unsafe to use. Any change in the performance such as lowered trigger force and shorter trigger travel indicates possible wear and such guns should be inspected, replaced, or properly repaired. SERVICE SHOULD BE PERFORMED ONLY BY QUALIFIED PERSONNEL.

Always wipe down gun with a proper gun cloth before storing. Damage to metal finish will occur if you forget even once.

Use gun often. Seals remain more flexible when used often. DO NOT oil valves excessively. A few drops of airgun lubricant will go a long way in a CO2 rifle. Three (3) drops of oil every 500 shots should be adequate. When in doubt, under lube the gun (less is better)

SPECIFICATIONS

Middle Screw (p/n'1808): Overtravel adjustment. Turn the middle screw clockwise to reduce or counter-clockwise to increase over travel of the trigger (p/n#1804) beyond the point where there trigger releases sear (p/n'1805). The middle screw can be turned clockwise too far which will prevent gun from firing. It is recommended that over travel be minimal for best trigger feel. The factory presets the over travel for about 0.25"

- Bottom Screw (p/n#1810): Tension adjustment. Turn the bottom screw clockwise to increase or counter-clockwise to decrease trigger pull weight. The factory presets the trigger pull weight for about 4 lb. (17.8N). WARNING: THE TRIGGER ON THIS GUN IS CAPABLE OF BEING SET BELOW TWO (2) lb. (8.9N). ACCIDENTAL DISCHARGE CAN OCCUR IF THE RIFLE IS DROPPED.

Modification of the gun's mechanism may cause a gun to malfunction. Tampering with a gun may make it unsafe to use. Any change in the performance such as lowered trigger force and shorter trigger travel indicates possible wear and such guns should be inspected, replaced, or properly repaired. SERVICE SHOULD BE PERFORMED ONLY BY QUALIFIED PERSONNEL.

Always wipe down gun with a proper gun cloth before storing. Damage to metal finish will occur if you forget even once.

Use gun often. Seals remain more flexible when used often. DO NOT oil valves excessively. A few drops of airgun lubricant will go a long way in a CO2 rifle. Three (3) drops of oil every 5•

Middle Screw (p/n'1808): Over travel adjustment. Turn the middle screw clockwise to reduce or counter-clockwise to increase over travel of the trigger (p/n#1804) beyond the point where the trigger releases sear (p/n'1805). The middle screw can be turned clockwise too far which will

prevent gun from firing. It is recommended that over travel be minimal for best trigger feel. The factory presets the over travel for about 0.25"

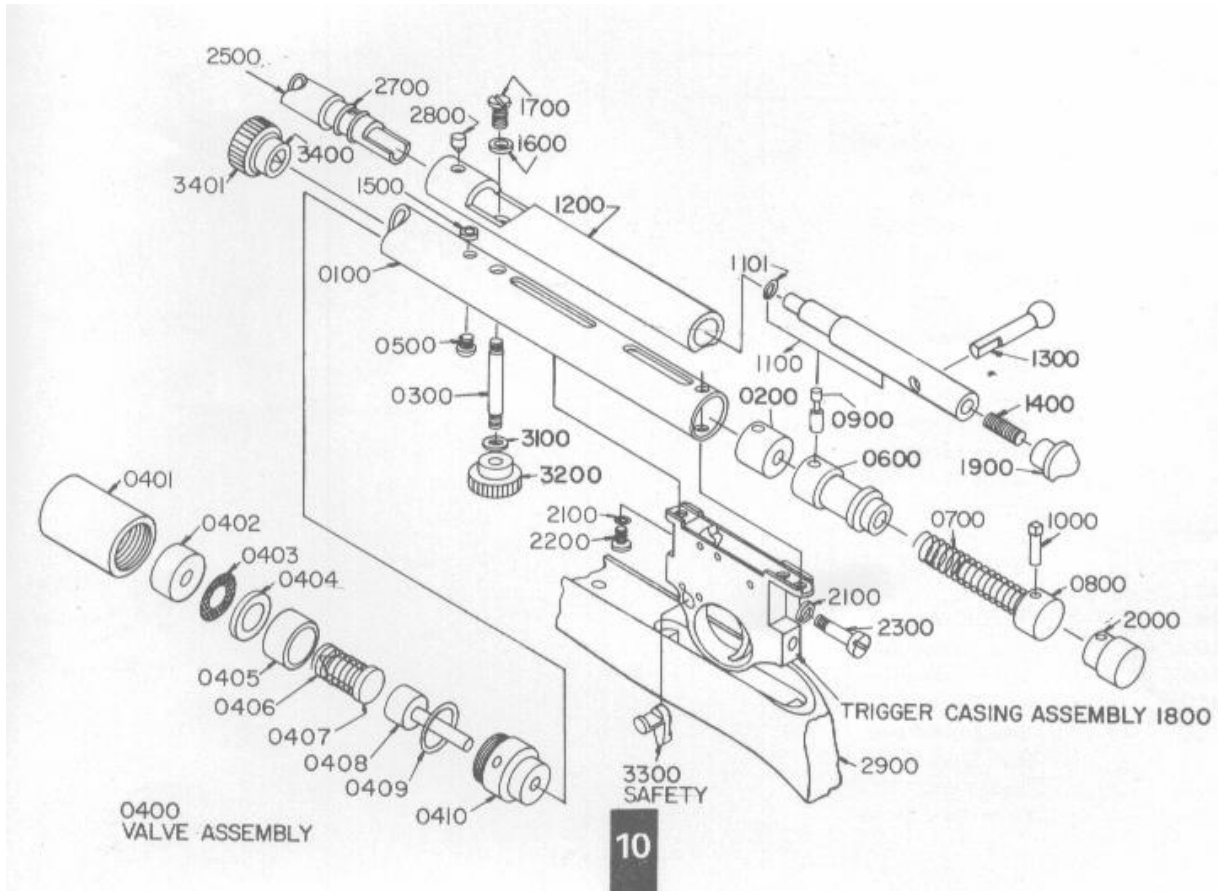
- Bottom Screw (p/n#1810): Tension adjustment. Turn the bottom screw clockwise to increase or counter-clockwise to decrease trigger pull weight. The factory presets the trigger pull weight for about 4 lb. (17.8N). **WARNING: THE TRIGGER ON THIS GUN IS CAPABLE OF BEING SET BELOW TWO (2) lb. (8.9N). ACCIDENTAL DISCHARGE CAN OCCUR IF THE RIFLE IS DROPPED.**

Modification of the gun's mechanism may cause a gun to malfunction. Tampering with a gun may make it unsafe to use. Any change in the performance such as lowered trigger force and shorter trigger travel indicates possible wear and such guns should be inspected, replaced, or properly repaired. **SERVICE SHOULD BE PERFORMED ONLY BY QUALIFIED PERSONNEL.**

Always wipe down gun with a proper gun cloth before storing. Damage to metal finish will occur if you forget even once.

Use gun often. Seals remain more flexible when used often. **DO NOT** oil valves excessively. A few drops of airgun lubricant will go a long way in a CO2 rifle. Three (3) drops of oil every 500 shots should be adequate. When in doubt, under lube the gun (less is better)

Type.....Dingle-shot bolt action rifle
Power SourceTwo CO, cartridges (12 gram)
AmmunitionLead airgun pellet 0.177 cal (4.5 mm) Max.
C.T.C0.50 inch (13mm) C 32.8 Ft. (10 meters)
Velocity600 fps. When firing 0.177 cal at 60°F-80°F
TriggerSingle stage, three way adjustable
SafetyTrigger block safety, lever actuated
SightsOpen fixed front & adjustable rear
BarrelSteel button rifled (12 grooves)
Scope Grooves11.5 mm cut in breech block
Length0 inches (1015 mm)



QB78 Parts Description

	1800 Trigger
0100 Tube	1900 Breech Plug
0200 Inside Plug	2000 Tube Plug
0300 Locating Screw	2100 Casing Lock Washer (2)
0400 Valve Ass'y	2200 Front Casing Screw
0401 Piercing Body	2300 Rear Casing Screw
0402 Filter	2400 Strap Ass'y
0403 Screen 0404 Washer 0405 Spacer	2500 Barrel.177 cal
0406 Check Valve Spring	2700 Barrel O ring (2)
0407 Piercing Pin	2800 Barrel Set Screw
0408 Valve Stem Ass'y	2900 Hardwood Stock
0409 O Ring, 19 mm	3100 Plain Washer

0410 Exhaust Valve Body	3200 Locating Screw Nut
0500 Valve Set Screw 0600 Hammer	3300 Safety
0700 Hammer Spring	3400 Tube Cap Ass'y
0800 Cocking Block	3401 O Ring, 19 mm
0900 Hammer Pin	3500 Butt Plate
1000 Cocking Pin	3600 Butt Plate Screw (2)
1100 Breech Bolt Ass'y.177 cal	3700 Sight Package
1101 O Ring	3900 Buck Fill Adaptor Ass'y
1200 Breech	
1300 Bolt Knob	
1400 Breech Bolt Set Screw	
1500 Breech Gasket	
1600 Lock Washer	
1700 Hold Down Screw	

- 1800 Trigger Casing Ass'y
- 1801 Trigger Casing
- 1802 Pivot Pin(3)
- 1803 Sear Nub Pin(2)
- 1804 Trigger
- 1805 Sear
- 1806 Sear Spring
- 1807 Top Screw
- 1808 Middle Screw
- 1809 Trigger Spring
- 1810 Bottom Screw
- 1811 Safety Spring
- 1812 Safety Rod
- 1813 Casing Plate
- 1814 Casing Plate Screw (2)
- 2400 Strap Ass'y
- 2401 Strap
- 2402 Strap Screw
- 2403 Strap Screw Nut
- 3700 Sight Package
- 3701 Rear Sight
- 3702 Rear Sight Ramp
- 3703 Rear Sight Screw (2)
- 3704 Front Sight
- 3705 Front Sight Screw

